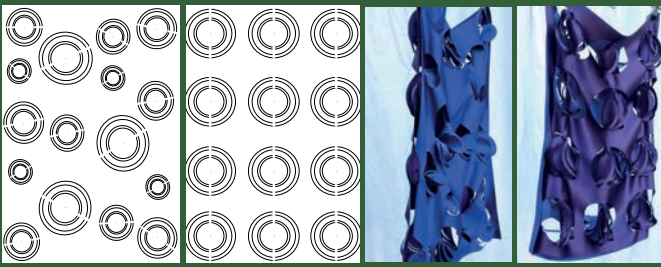
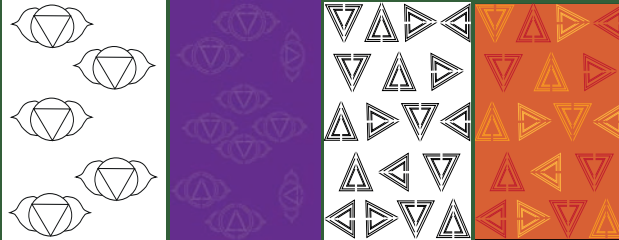


## Laser Cut Plans

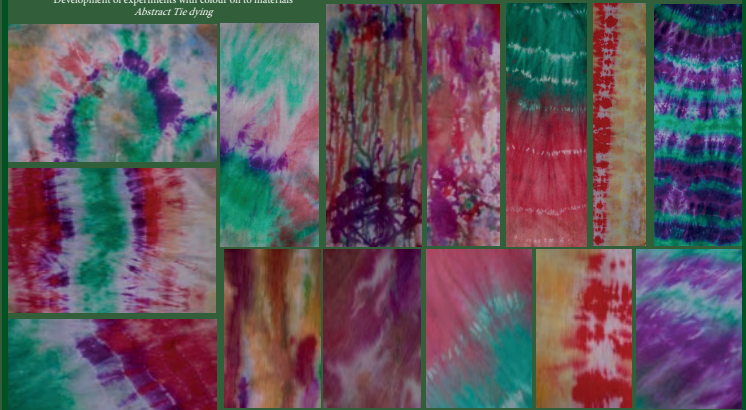


These designed are based on the chakras.

This was originally a laser cut pattern on to acrylic. Due to not having access to the laser, I made these in to digital prints has this was very hard to recreate neatly using the drill.

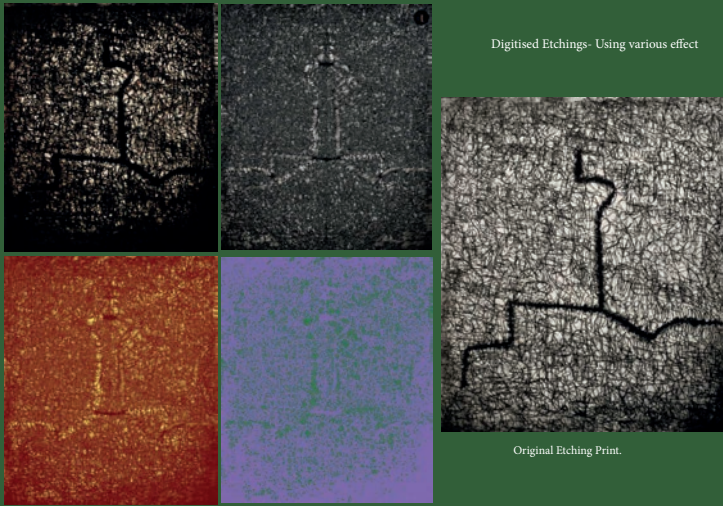


## Development of experiments with colour on to materials Abstract Tie dying



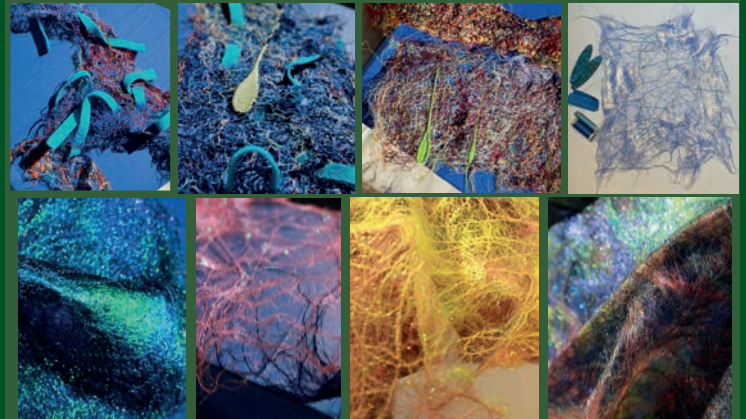
1. Get your chosen fabric, in this case white Cotton- linen mix and cut it in to varying sizes.
2. For use a bowl big enough for the fabric, with water and salt then place your fabric in side for 5-10 minutes.
3. After 10 minutes, take the fabric out, wring it out.
4. Next break, fold or roll the fabric, and place elastic bands on each section- how much elastic bands you add and which method you use is dependent on how abstract you want the tie to be.
5. Lay out plastic covering an 2 areas, one to dye on, the other for post drying for it to dry.
6. Now add your chosen colour dye ensuring you have covered the entire surface- again there is no specific method as it is abstract.
7. Then place on the drying area and leave to develop for 2-4 hours.
8. Once you have allowed it to dry, rinse the fabric, until water runs clear, ring any excess water.
9. Take out the elastic, bands and unravel the fabric. Leave in air dry.
10. These prove out any colours- you may need search to get out any tough stains.

## Digitised Etchings- Using various effect



Original Etching Print.

## Developing the splat



I wanted to develop the splat idea in to materials as doing this digitally did not work in the way I wanted it - I began sandblasting threads into water soluble fabric and doing free hand motion embroidery to secure the threads. Washing out the water soluble fabric- then leave my threads all meshed together! I took the idea further by having equal threads to stitching, then to creating the drip effect on the digital embroidery machine.

I felt that the threads was to bold and didn't represent the anxiety pathway well. I then used Angelina fibre to create a more surreal/confusing/whimsical feel. This was done using the same method as above, I only used cotton Angelina fibres as I wanted to use a lot of it in one sample.

If I had access to the studio I would have learned about how to use the digital embroidery software, made a range of drip effects rather than using the pre-set and placed it on top of the Angelina.

## Drilling Samples



Due to the lack of studio access, I have to recreate my laser cut designs by hand and make them simple but effective. I bought a Dremel, I used experimented with the drill attachment, the rotary tool and the cutting attachment.

Out of the 3, the cutting attachment was the most successful. I then went on to experimenting with basic shapes and tried to cut out lines to make it look like the samples I was able to cut out on the laser. I chose to simple shapes as it will look better as a finished product. I initially cut into cardboard and MDF but I felt that I would not fit the best for the look I wanted.