

## **Nadire Gokmen**

### 3-Dimensional Design

Urban Trace // will be a collection of steel and ceramic sheets- fixed to the wall, displaying the surface marks created and obtained during their placement within an urban environment: Manchester.

As a maker my practice is led by a fascination for material and surface. I find myself closely observing the unintentionally made marks that line the surfaces of our interiors and exteriors. The seemingly frozen flow of water now etched as a permanent line or the circular rust scratches that draw the silhouette of an absent object. These traces or surface marks, unintentionally made through our movement, as well as by nature and its process of decay highlight and reinforce both our existence and a physical display of time passing.

I work predominantly with process and through this installation I plan to draw on and develop the results of a previous project combined with a process that I have created. The previous project consisted of 13 A5 sheets of steel being taped to the ground in various locations around Manchester with the intention to physically capture a week's duration in each location through the traces accrued on each sheet. These patterns were created as a consequence of both the surfaces that the steel sheets existed on as well as the varying levels of pedestrian and vehicle movement, as well as exposure to rain. With the ability to exhibit the piece in a large space I intend to increase both the size and number of sheets used. I will combine this with a process I have developed that enables the transfer of steel's rusted surface onto clay. The process will be utilised to illustrate the reverse surface of the steel that when placed on a wall would otherwise not be seen. By creating both a comparison and connection between materials, the ceramic and steel will exist together, with the ceramic components acting as permanent records of the rusted state. Curated as a collection the sheets will display a visual montage of the surfaces' marks that exist around the city, intending to elevate the otherwise overlooked patterns that exist here. Mounted to the wall, the installation will allow the viewers to inspect the sheets both up close as individual objects and afar, as a collection.

To accompany the installation, I intend to create a handout that will display the surfaces of all the steel sheets and on the reverse the tapes that have been used to fix them to the ground. This handout will be able to be taken by the exhibition viewers flattening the physical objects back to an image state. As part of my digital submission, I have developed my initial handout plans, into a foldable book. The movement of the book allows the images to be cut into sections and direct comparisons to the surfaces of other sheets of steel.

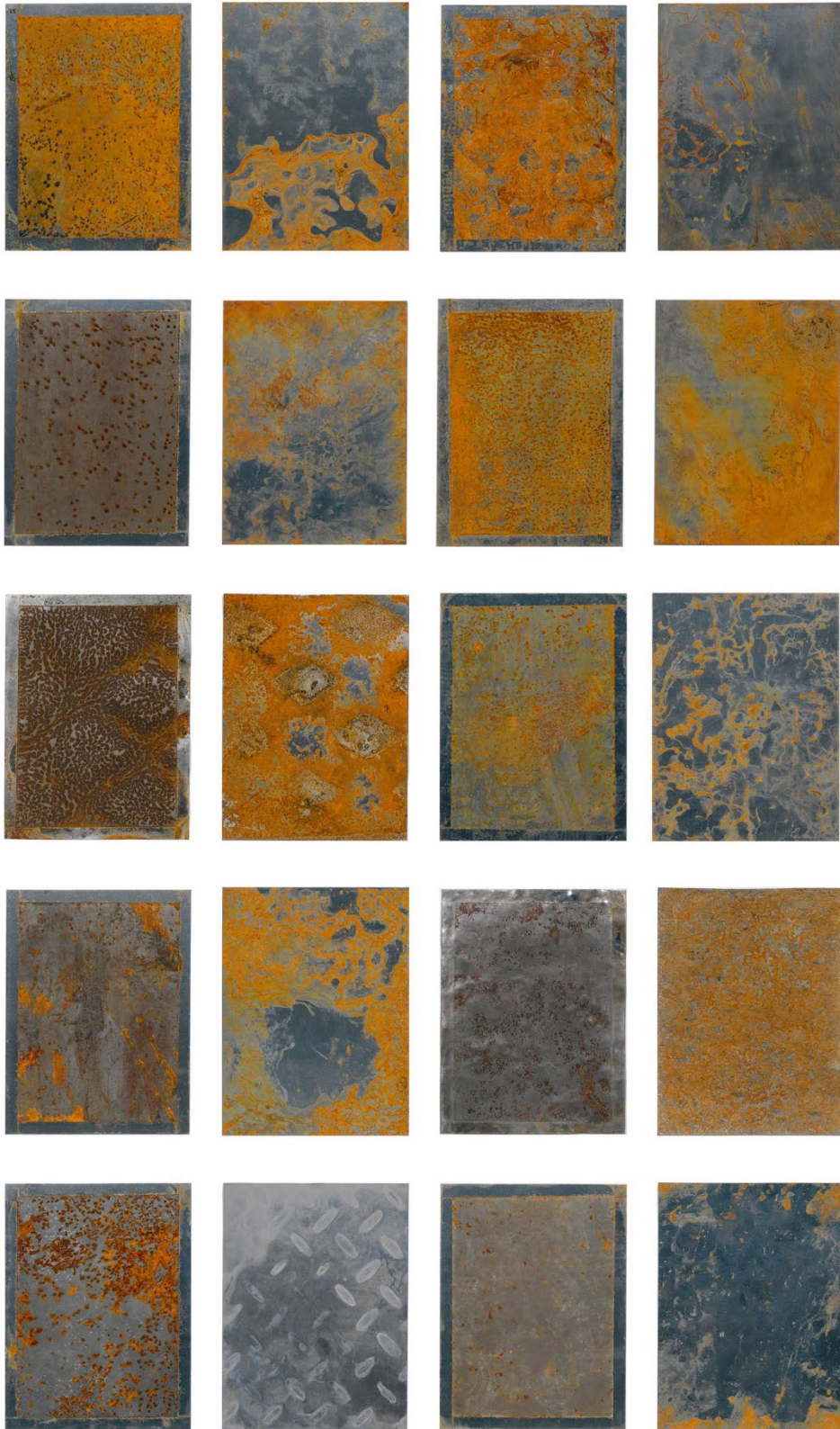
In the previous project out of the 13 sheets that were placed 1 went missing and 1 was torn by force of movement after before the week duration had ended. Due to this, I intend to place 35 sheets of steel out with the intention to use 28 of them.



TAPING SHEETS TO SURFACES

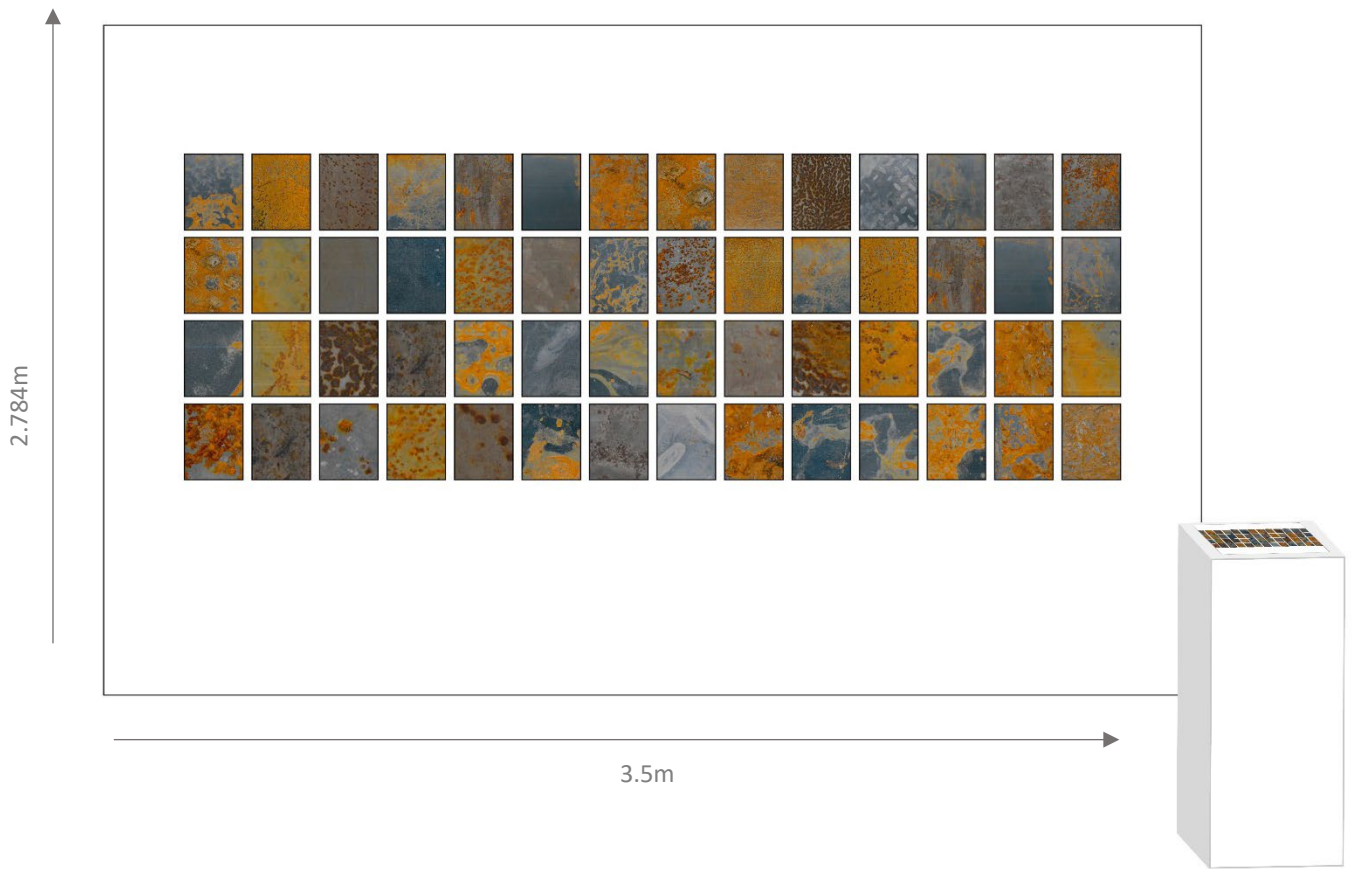


PROCESS OF TRANSFERRING RUST SURFACE TO CERAMIC.  
CLAY ON METAL SURFACE – FIRED CERAMIC SHEET- METAL SHEET AFTER PROCESS

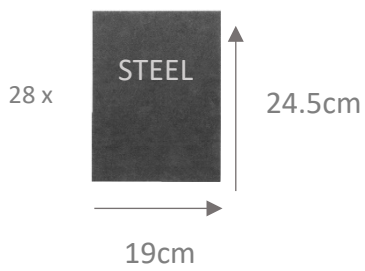


OUTCOMES OF PREVIOUS PROJECT – SHEETS OF STEEL

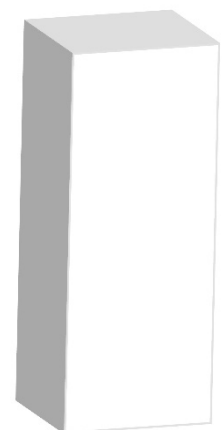
-



COMPONENTS:



A3 HANDOUT- double sided



1 x 40cm x 40cm x 90cm Plinth (to place the handouts on)

**Install:** The pieces, will almost float from the wall using exposed fixtures attached to the wall and holding the ceramics and metal in place. The install will take one day, a ladder will be needed to reach higher points and one plinth as stated above.

<b>Costs:</b>	<b>Source</b>	<b>Quantity</b>	<b>Cost (£)</b>
Printing Ink (testing period)	Tesco	1	32
5Lt White Stoneware casting slip (testing period)	Pot Clays	1	19.34
35 x 190x245x0.7mm stainless steel sheets	MMU	35	16.30
4mm Laser Grader MDF (600x300mm)	MMU	3	5.85
Laser cutter use	MMU	/	10
5 Lt White Stoneware casting slip	Pot Clays	1	19.34
10Lt Buff Earthenware/stoneware casting slip	Pot Clays	1	38.69
A3 Cyclus Recycled paper	MMU	100	7
A3 Colour double side printing	MMU	100	70
	<b>Total (£)</b>		<b>218.51</b>